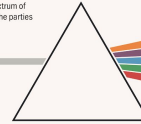








Make Your Own Political Party

Your guide to creating your perfect party.

THE POLITICAL PARTIES PRISM

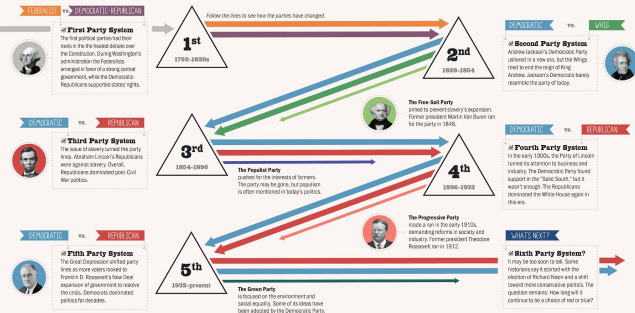
Political parties emerged in the earliest days of our nation. Each party creates a platform that reflects its ideas. From taxes to social issues, the parties' platforms span a wide spectrum of ideas. Let's take a look at the founding principles of the parties that have won the White House.



<p>No party</p> <p>Our first president did not belong to any political party. In fact, during his second term, he warned of the danger of political parties. Despite this, Washington became Federalist.</p>	<p>Federalist</p> <p>Named for its support of a federal constitution, the Federalists focused on a strong central government and a focus on industry, industry and manufacturing.</p>	<p>Democratic Republican</p> <p>As the first opposition political party, the Democratic Republicans believed in a small government, states' rights, and a focus on westward expansion.</p>	<p>Democratic</p> <p>The Democratic Party began as a branch of the Democratic Republicans who supported Andrew Jackson. The party opposed the "tariff war," which led to the nullification crisis.</p>	<p>Whig</p> <p>The Whig Party emerged in opposition to Andrew Jackson. Like the Democrats before him, the Whigs believed in a strong central government. The Whig Party also supported business and industrial growth.</p>	<p>Republican</p> <p>The Party of Lincoln began as a combination of Whigs, the Know-Nothing Party, and Northern Democrats who stood against the expansion of slavery and supported industrial growth.</p>
<p>1789</p> <p>First election won</p>  <p>GEORGE WASHINGTON</p>	<p>1790</p>  <p>JOHN ADAMS</p>	<p>1800</p>  <p>THOMAS JEFFERSON</p>	<p>1828</p>  <p>ANDREW JACKSON</p>	<p>1840</p>  <p>WILLIAM HENRY HARRISON</p>	<p>1860</p>  <p>ABRAHAM LINCOLN</p>

THE TWO-PARTY SYSTEM

Political parties bounce to the left and right, often changing direction at major turning points. At each turn, the American voter has been offered two main choices. We call it the two-party system, and historians usually divide it into five eras. Since the 1850s, the two major party names have stayed the same, but their core ideas have changed.



The Assignment

In this assignment you will create a new political party. Your party description must include:

- Your party's name
- Your party's platform
 - Goals of the party (both foreign and domestic)
 - Your stance on major issues of the day
- Your party's mascot or symbol

The Creative Process

- Find inspiration
- Research
- Brainstorm ideas
- Limit and edit ideas
- Put the ideas together into a platform and image.

Brainstorming

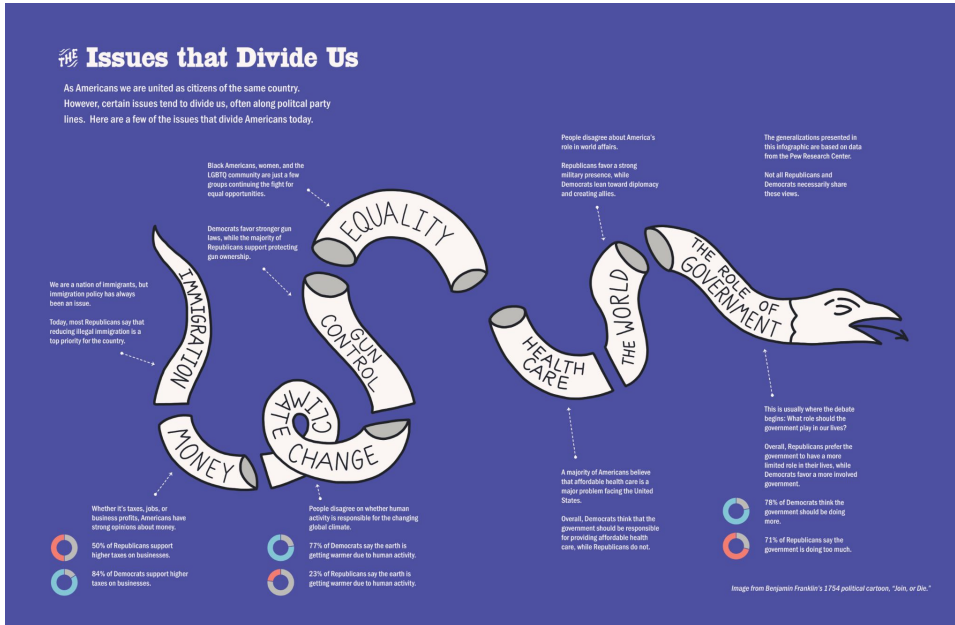
- What makes a good mascot or symbol?



Cartoonist Thomas Nast first used an elephant to represent the Republican vote in 1874.

Brainstorming

- What are major issues of the day, and what do I believe?



Brainstorming

- What are some brands that you like? What makes those brand names effective?



Brainstorming

- What issues do I want to avoid - to not include in my platform?
- What are the most important issues to include in my platform?

Brainstorming

- How could my most important issues translate to a mascot and party name?



Environmental protection is an important issue for the Illinois Green Party.

Make your own party

- Use the handout included on the web page to make your own party.